

SALTDIP™ Pro is an electronic testing device for accurate measurement of both salinity and temperature of swimming pool and spa water.

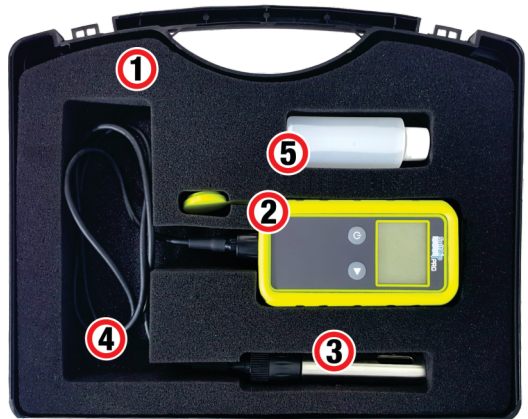
Note: Calibrate before first use.

Contents

1. Carrying case with Padded Foam Protection
2. Handheld Meter with stainless steel battery cover and rugged rubber casing
3. Salt Conductivity / Temperature Probe w/ Stainless Steel Probe Guard
4. Removable 3 Ft Extension Cable
5. 4000ppm NaCl Calibration Solution
6. Quick Start Guide

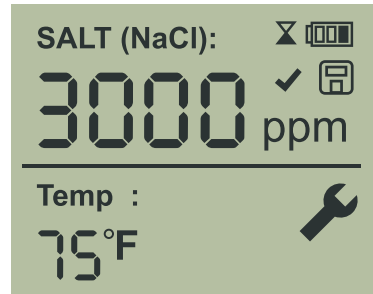
Not Supplied:

- 2 AAA Batteries
- Flat head screwdriver or a coin to open battery compartment





SALTDIP™ PRO Display Indicators

3000	—	Salt measurement display (NaCl ppm)
75°F	—	Temperature display C/F
⌚	—	Measurement in progress
🔋	—	Battery level indicator
✓	—	Measurement completed
💾	—	Last saved reading
🔧	—	Error warning



Measurement

1. Prior to testing, swish dry probe in water for 5 seconds to moisten sensor.
2. Gently drop probe into sample water (pool, spa, or sample cup/bucket). Extension cable can be removed and probe can be directly attached to the meter as well.
3. Press the ON/OFF button. The most recent measurement will always appear along with the DISK icon.
4. Press the START button to begin a new measurement.
5. During the new measurement, the HOURGLASS indicator will blink before all stabilized parameters are achieved. Allow up to 20 seconds for testing to complete.
6. When measurement is finished, unit will beep and newest data will be displayed. The data will be saved in the memory until the next measurement. Only the latest measurement is stored and all prior measurements are discarded.
7. When finished using the meter, press the ON/OFF button once to turn the device off or the meter will turn off automatically after 1 minute.
8. Always rinse the probe with fresh tap water after each use and store in carrying case.

PROBLEM		CAUSE	SOLUTION
TROUBLESHOOTING	Meter will not turn ON	Batteries dead	Replace Batteries
		Wrong Battery Polarity	Confirm batteries are installed properly
		Salt or Temperature is out of range	Make sure test sample is within operating ranges. Salt: 200-9800ppm Temperature: 41-122°F (5-50°C)
		Low Batteries	Replace Batteries
Salt Reading are drifting or changing		Probe is dirty	Clean Probe with WATER ONLY and a soft sponge. Check calibration after cleaning using directions on bottle

Specifications / Features

- Operating ranges: 41-122°F (5-50°C), 200-9800ppm (Salt and TDS).
- Temperature sensor: Selectable °C/°F system. Resolution: 0.1°C/.01°F (1°F if $\geq 100^\circ\text{F}$).
- Automatically saves last recorded reading until new measurement is taken.
- 42x34mm viewing area LCD, Grey background with Black characters, White LED backlight.
- Auto-power off to save batter after 1 minute idle.

Install Batteries *(Requires two AAA batteries)*

1. Peel back rubber casing from top of unit and twist off the battery compartment cap.
2. Observe polarity on back of meter and Insert two AAA batteries.
3. Replace the battery compartment cap and make sure it is tightly secured to avoid water intrusion.
4. Battery level indicator will show when low. Replace as necessary.

Toggle °C/°F

- To change the displayed temperature units between °C or °F: With the unit turned ON, press and hold START button for 4 seconds.

IMPORTANT! CARE AND STORAGE

- Store the SALTDIP™ PRO inside carrying case and keep from extreme temperature.
 - Remove metal probe guard and rinse the probe in fresh water after each use to avoid cross contamination
 - DO NOT soak the probe in any cleaning solution or chemicals. Doing so may cause degradation in performance.
- When cleaning the probe, use fresh water only

WARRANTY

This instrument is guaranteed to be free from defects in material and workmanship for a period of one year from the date of original purchase. The probe is guaranteed to be free from defects in material and workmanship for a period of six months from the date of original purchase. Damages brought on by abuse, operator negligence, accident, misapplication, mishandling or acts of God will void this warranty. This warranty is limited to the repair or replacement of the product at the discretion of the manufacturer and will not include transportation costs. This product cannot be returned without a return authorization number from Solaxx. For warranty support or a Return Authorization number, log onto www.solaxx.com and click on support or email: support@solaxx.com.